

After School



Spartanburg
Humane Society Inc.
education and adoption center

Camp Love-A-Pet

A summer day camp for kids who love animals. Campers learn about basic dog obedience, pet care, and issues impacting the welfare of animals. Activities include guest speakers, arts and crafts, journal writing, field trips, and more!

2 week sessions for grades 5 - 10

1 week sessions for grades 3 - 4

Kids Who Care

After school program for kids in third through eighth grades! Six weekly sessions at the Spartanburg Humane Society focus on pet care, pet health, and responsible pet ownership, and include a fun service project that directly helps animals at the SHS.

*Humane Education
for K - 12!*

Attention Community Groups!

We welcome the opportunity to present our programs to community groups, clubs, and libraries. Educational tours of the Humane Society can also be scheduled for up to 15 visitors at a time.



Spartanburg
Humane Society Inc.
education and adoption center

www.spartanburghumane.org

Adopt ext. 101

Donate ext. 107

Good Dog Academy ext. 109

Lost & Found ext. 117

Veterinary Clinic ext. 115

Volunteer ext. 108

150 Dexter Road

Spartanburg, SC 29303

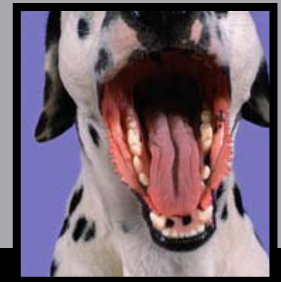
864.583.4805, ext. 113

www.spartanburghumane.org/education

K - 1st grades



High School



These Are the Ways We Love Our Cats – K

A friendly puppet and a simple song help students learn about cat care routines at home and in animal shelters.

Time: 30 minutes

SC Learning Standards:

ELA: K-6.1, 6.4, 6.5

Science: K-2

Social Studies: K-2, 4

Visual/Performing Arts:

Music: K-1, Singing

Character Education

Oh Where, Oh Where, Is My Little Dog's Bowl? – 1

Students work together to identify the needs of a felt dog named Sam. A fun song helps to reinforce the basics of dog care.

Time: 45 minutes

SC Learning Standards:

ELA: 1 - 6.5

Visual/Performing Arts:

Music: 1-1, Singing

Character Education

What's Buggin' You?

Crime Scene Investigation – 9 - 12

Students use forensic entomology to investigate a suspected case of pet neglect involving a dog named Brad. Students will also brainstorm outreach messages about meeting pets' needs.

Time: 1 hour

SC Learning Standards:

ELA: E1, E2, E3, E4-3.1, 4, 5, 6

Science: PS-1, B-1

Character Education

Which Dog Was It?

Crime Scene Investigation – 9 - 12

Bite mark analysis helps to introduce students to the complexities of a pet dog bite case, including the dangers of tethering. Students will consider ways to educate communities about dog bite prevention.

Time: 1 1/2 hours

SC Learning Standards:

ELA: E1, E2, E3, E4-3.1, 4, 5, 6

Science: PS-1, 4.8, B-1

Health/Safety Education:

Content Areas: 1.4, 5, 7, & 4.1

Character Education

"I am in awe of how you gear each lesson to the age of your audience."

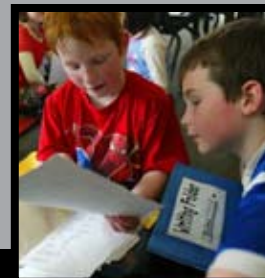
Janet Sherbert, Reidville Elementary School



High School



2nd - 3rd grades



Pet Economics – 9

In this activity, students will learn about the basic supplies necessary for responsible pet care and will participate in a budgeting exercise based on set income and expenses.

Time: 1 hour

SC Learning Standards:

Math: EA-1

Economics: 1, 4

Character Education

Be a C.R.I.T.I.C. – 11

Using the C.R.I.T.I.C. method (Claim, Role of claimant, Information backing the claim, Test, Independent verification, Conclusion), students will analyze advertising and promotional materials about issues relating to pets and their welfare.

Time: 1 hour

SC Learning Standards:

ELA: E3-2,

Health/Safety Education:

Content Areas: 1.2, 6 & 2.1, 2, 4
Character Education

Play It SAFE! – 2

Students are challenged to consider if different activities are SAFE or UNSAFE for pets. The song "Love, Love, Love Your Pet," reinforces each concept.

Time: 45 minutes

SC Learning Standards:

ELA: 2-2.2, 2.4, 3.1, 3.10, 6.1, 6.2, 6.5

Science: 2-2

Visual/Performing Arts:

Music: 2-1, Singing
Character Education

Adding Up Pet Populations – 3

This program explores the mathematics of pet populations. After an introduction to spay/neuter surgery, a powerful tool used to control overpopulation, students perform a mock spay surgery on a stuffed model.

Time: 1 hour

SC Learning Standards:

Math: 3-1, 2

Character Education



Community service projects can be arranged to follow up on information learned during class.

4th - 5th grades



Middle School



R-E-S-P-O-N-S-I-B-L-I-T-Y – 4

After learning about the responsibilities of pet ownership, students will test their knowledge with a thought exercise. Will Carey, who has just visited the local humane society, have the time and money to adopt a dog based on her weekly babysitting schedule?

Time: 1 hour

SC Learning Standards:

ELA: 4-1.7, 2.4, 4

Math: 4-1, 2

Character Education

Whodunit? Mystery Theatre – 5

Role-playing and math are both used to engage students in a discussion about the common ways that pets end up at animal shelters and how individuals can control pet overpopulation.

Time: 1 hour

SC Learning Standards:

Math: 5-1, 3

Character Education

Read the Label – 8

This activity will challenge students to compare different types of foods for nutritional content and decide which is best for different dogs and cats. The importance of nutrition and exercise for pets and people is also discussed.

Time: 1 hour

SC Learning Standards:

Math: 8-1, 2, 3

Health/Safety Education:

Content Areas: 1.2, 3 & 2.1, 3

Character Education

The Case of the Missing Dog

Crime Scene Investigations – 6, 7, 8

Students uncover key issues about being a responsible pet owner as they use fingerprint and hair analysis to assist Officer Beasley in his search for a dog named Sam.

Time: 1 hour

SC Learning Standards:

ELA: 6.2, 7.1, 8.1, 2

Social Studies: 7.7

Science: 6.1, 7.1, 8.1

Character Education



**“Great Job!
Students learned how
to keep animals safe and how to
keep themselves safe around animals.”**

Melissa Fowler, Abner Creek Elementary

Middle School



Bite Prevention



It All Adds Up – 6

Students calculate the potential number of offspring from one unspayed female cat in one year. Creating a bar chart, students track the number of cats that came in to the shelter over 12 months. A wrap-up discussion focuses on how communities can combat pet overpopulation.

Time: 1 hour

SC Learning Standards:

ELA: 6-2, 5, 6

Math: 6-1, 6

Character Education

Diagnose It! – 7

Students are introduced to zoonoses by matching their “symptoms” to different diseases passed from animals to people.

Time: 1 hour

SC Learning Standards:

Science: 7-3.4

Health/Safety Education:

Content Area: 1.1, 2, 3, 6

Character Education

Reading the Numbers – 7

Shelter statistics are examined to reveal animal welfare issues in the community. Students are challenged to consider how to respond to these issues.

Time: 1 hour

SC Learning Standards:

ELA: 7-2.1, 2.4 Social Studies: 7-7.7

Math: 7-1.7, 6.1 Character Education

Play It Safe with Dogs – K

Using short video clips, role-playing, and music, students will learn some basic bite prevention strategies.

Time: 30 minutes

SC Learning Standards:

ELA: K-6.1, 6.2, 6.4, 6.5

Health/Safety Education:

Content Area: 4.1, 3

Visual/Performing Arts:

Music: K-I, Singing

Character Education

Behaving Safely Around Pets – 2

Games, mazes, puzzles, short video clips, and role-playing further understanding of proper and safe behavior around dogs.

Time: 45 minutes

SC Learning Standards:

ELA: 2-2.2, 2.7, 3.10,

6.1, 6.2, 6.5, 6.6

Health/Safety Education:

Content Area: 4.1, 2, 3, 6

Character Education

Red Light, Green Light – 1

Students will identify safe and unsafe behaviors around familiar and unfamiliar dogs and review with a game of Red Light, Green Light.

Time: 45 minutes

SC Learning Standards:

ELA: 1 - 6.5

Health/Safety Education:

Content Area: 4.1, 2, 3, 6

Character Education

B.A.R.K.

Dog Bite Prevention – 3, 4, 5

Every year dogs bite more than 4.5 million people in the U.S. Most victims are children under the age of 13. BARK (Be Aware, Responsible, and Kind) uses fun activities, short video clips, and practice to teach kids how to reduce their risk.

Time: 1 hour

SC Learning Standards:

ELA: 3-6, 4-2, 5-2

Health/Safety Education:

Content Area: 4.1, 3, 6

Character Education

“Your interactive lessons keep the students’ interest and make them more meaningful.”

Gayle Martin, Beech Springs Intermediate Animal Lovers Club

South Carolina Learning Standards

Humane Education Programs Correlated to SC Learning Standards

Grade	Presentation	Character Education	Health & Safety Education	English Language Arts	Math	Science	Social Studies	Visual & Performing Arts
Kindergarten	These Are the Ways We Love Our Cats	Yes		K-6.1, 6.4, 6.5		K-2	K-2, 4	Music: K-I Singing
Kindergarten	Play It Safe with Dogs	Yes	Area 4.1,3	K-6.1, 6.2, 6.4, 6.5				Music: K-I Singing
1	Oh Where, Oh Where, Is My Little Dog's Bowl?	Yes		1-6.5				Music: 1-I Singing
1	Red Light, Green Light (bite prevention)	Yes	Area 4.1, 2, 3, 6	1-6.5				
2	Play It SAFE!	Yes		2-2.2, 2.4, 3.1, 3.10, 6.1, 6.2, 6.5		2-2		Music: 2-I Singing
2	Behaving Safely Around Pets (bite prevention)	Yes	Area 4.1, 2, 3, 6	2-2.2, 2.7, 3.10, 6.1, 6.2, 6.5, 6.6				
3	Adding Up Pet Populations	Yes			3-1, 2			
4	R-E-S-P-O-N-S-I-B-I-L-I-T-Y	Yes		4-1.7, 2.4, 4	4-1, 2			
5	Whodunit? Mystery Theater	Yes			5-1, 3			
3, 4, 5	B.A.R.K. Dog Bite Prevention	Yes	Area 4.1, 3, 6	3-6, 4-2, 5-2				
6	It All Adds Up	Yes		6-2, 5, 6	6-1, 6			
7	Diagnose It!	Yes	Area 1.1, 2, 3, 6			7-3.4		
7	Reading the Numbers	Yes		7-2.1, 2.4	7-1.7, 6.1		7-7.7	
8	Read the Label	Yes	Areas 1.2, 3 & 2.1, 3		8-1, 2, 3			
6, 7, 8	CSI: The Case of the Missing Dog	Yes		6.2, 7.1, 8.1, 8.2		6.1, 7.1, 8.1	7.7	
9	Pet Economics	Yes			EA-1		Econ: 1, 4	
High School	CSI: What's Buggin' You?	Yes		E1, E2, E3, E4-3.1, 4, 5, 6		PS-1, B-1		
11	Be a C.R.I.T.I.C.	Yes	Areas 1.2, 6 & 2.1, 2, 4	E3-2				
High School	CSI: Which Dog Was It?	Yes	Areas 1.4, 5, 7 & 4.1	E1, E2, E3, E4-3.1, 4, 5, 6		PS-1, 4.8, B-1		